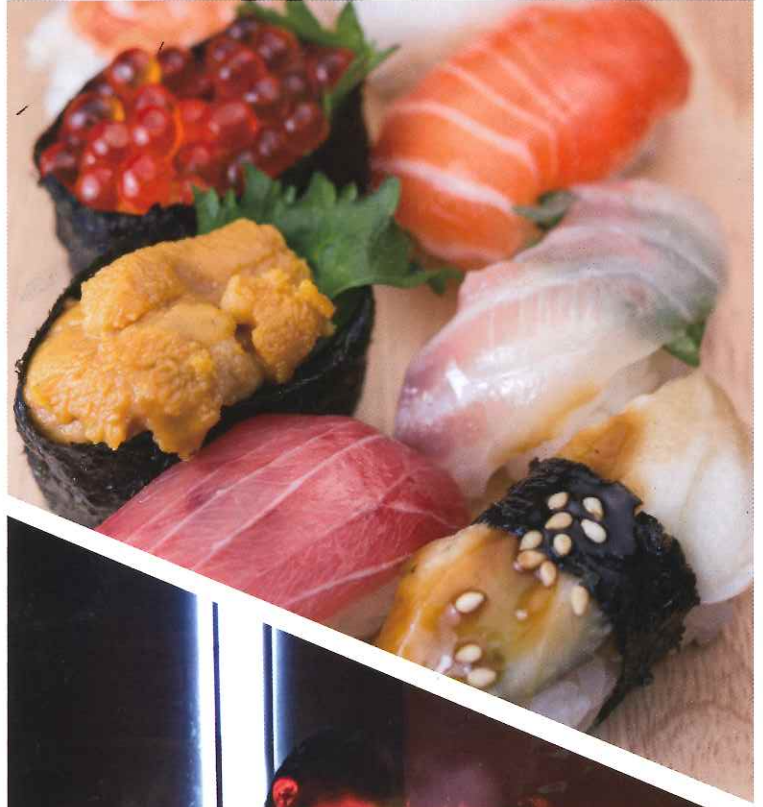


**REAL**  
**JAPAN**  
nagoya



# Nagoya

Nagoya is easily accessible all major means of transportation, it has an international airport, is a stop on the Meitetsu, Kintetsu and JR rail lines—including the Shinkansen(bullet train)—and is easy to get to via major high-ways. Prepaid cards are available for both the bus and subway systems, and ticket machines take paper money as well as coins.

## Bus

Nagoya, Sakae and Kanayama station are the the main city bus terminals. Standard bus fare is ¥210 for adults and ¥100 for children. For more information, check the information offices at Oasis 21, at Nagoya Station near the south ticket gate of the Higashiyama line, or on the web at [kotsu.city.nagoya.jp](http://kotsu.city.nagoya.jp). The city bus system also has two late night bus routes on weekdays that follow the Higashiyama Line: Route L-1 departs Sakae Bus Terminal (across from the Mitsukoshi department store) Gate 21, bound for Fujigaoka subway station at 0:45 and 1:30. The L-1 bus also departs from Fujigaoka subway station, bound for Sakae Bus Terminal at 23:55 and 0:35. Route L-2 for Takabata departs the Sakae Bus Terminal Gate 22 at 1:30. Buses from Takabata subway station depart at 0:35 with several stops on the way to Sakae Bus Terminal. The fare is ¥420 for adults and ¥200 for children.

## Subway

The subway system is the easiest and most convenient form of transportation. Five main lines traverse the city and connect all major rail links and bus terminals. Subway fares range from ¥200 to ¥330, from early in the morning until around midnight. The Higashiyama line runs extended hours on Fridays and nights before a national holiday.

## Convenient one day ticket

- The Ichinichi Jyoshaken(一日乗車券)allow for unlimited rides for one day. For all subway lines:¥740 for adults or ¥370 for children. For city buses:¥600 for adults or ¥300 for children. For all subway lines and city buses:¥850 for adults or ¥430 for children.
- The Donichi Eco Kippu(土日エコ切符) allows unlimited travel on all subway lines and city buses for a single day on a Saturday or Sunday. The pass costs ¥600 for adults or ¥300 for children.

You can buy them from most automated ticket vending machines, but the easiest way to get one is to ask a station attendant or bus driver directly.

## By Car

Meihan (名阪), Meishin (名神), and Tomei (東名) expressways are used for all coming from other cities. Areas around Nagoya can be accessed by a number of local highways such as routes 41, 19 and 22.



# Learn cute "Kazarimaki 寿司 (decorative sushi rolls)" and the essence of Washoku

Have a wonderful experience of the showy Japanese culture during your stay. Learn how to make "Kazarimaki Sushi (decorative sushi rolls)" in English! You can make a sushi roll of a popular character decoration or of a very Japanese decoration. Through this lesson, you will learn about the essential quality and trivia about Japanese food, which is called washoku in Japanese. Decorative sushi rolls are easy to make for beginners, and we'll give you recipes and introduce some alternate ingredients so you can easily make them at your home. These decorative sushi rolls will absolutely make your friends happy if you make them at your party too!



You can try two kinds of your favorite Kazarimaki Sushi from above patterns or tell us your favorite characters you would like to make in advance.

## Supplier introduction



The teacher is an instructor of tea ceremony and healthy foods and has wide experiences of lessons in other countries, so you may hear unique stories that you may not get elsewhere.

<b>Fare(12years old or older)</b>	<b>¥ 11,000</b>
<b>Included in the program</b>	Lecture fee, lunch (your sushi and a side dish), recipes, apron for rent
<b>Available date</b>	Every day
<b>Time</b>	10:50 ~ 14:00 (Approx. 3.0 hours)
<b>Meeting place</b>	Moriyama Jieitai-Mae Station (Meitetsu Seto Line)
<b>Meal</b>	Lunch <b>Participants</b> 2 ~ 6
<b>Note</b>	<ul style="list-style-type: none"> <li>This activity is held in English.</li> <li>Please inform us beforehand if you have any allergies or religious or health restrictions. (Vegan menu available.)</li> </ul>

# 侍 Samurai knife making experience with a certified swordsmith

This activity will offer you the opportunity to make a Japanese-style knife in the atelier of genuine swordsmith. Is it possible to make your own samurai sword? Of course, if you have about 10 years of time to spend! (Please be noted that the knife you make will be as you can see from photos, NOT a Samurai sword) However, the basic Japanese style knife making course takes just one day. This is an activity where you can experience and learn the specifics of this traditional culture. After completing the work, you can take the Japanese-style knife you made to home with you.



The edge of the blade is about 9cm, length of the knife is about 20cm. You can design as you like. It is made from knife steel. By beating the heated steel many times, it becomes stronger and stronger. After sharpening it and completing the work with carving your name. Lastly, try a knife to see how well it cuts.

## Supplier introduction



The owner, Asano Taro, has been certified by the Japanese government as one of the few genuine Japanese swordsmiths. He devotes nearly 20 years to make of Japanese sword including an apprenticeship period and is the person who spread Japanese swordsmith in the world such as France, Canada during the period. In addition, he has a great personality and a feeling with thanks to all things. Not only making samurai knife there, you can enjoy talking with him.

<b>Fare(15years old or older)</b>	<b>¥35,000</b>
<b>Included in the program</b>	Knife steel, lecture fee, lunch
<b>Available date</b>	Every day
<b>Time</b>	8:45 ~ 16:00 (Approx. 7.0 hours)
<b>Meeting place</b>	Gifu-Hashima station (bullet train station)
<b>Meal</b>	Lunch <b>Participants</b> 2 ~ 4
<b>Note</b>	<ul style="list-style-type: none"> <li>This activity is held in English.</li> <li>There is always a danger of getting burnt, so please be very careful. We will not assume responsibility for an injury.</li> </ul>

Sushi **10021**  
**寿司** making experience and your handmade sushi lunch

Let's try making Oishii (delicious) sushi for your lunch!! There is a place called sushi academy where foreign students learn how to make sushi. And the students are eager to open their sushi restaurants in their countries. This time, what you try is not a serious lesson, do not worry. Enjoy your sushi creations for your lunch (10 pieces of sushi including Nigiri-zushi and Maki-zushi). While it may look easy to make, the taste depends on considerably on the way it is prepared, so please follow chef's way. The chef is professional in making and teaching, but also friendly and willing to show how to make. Let's have fun!! In the cooking lesson, you can also see the chef's cutting skill of fish into pieces, and try making miso soup and egg roll.



◀ The photo is just a sample and subject to change according to the season and availability.



<b>Fare(16 years old or older)</b>	<b>¥10,800</b>
<b>Included in the program</b>	Lecture fee, lunch (your sushi and a side dish), apron for rent
<b>Available date</b>	Weekday minimum 5person~/Weekend minimum 1person~
<b>Time</b>	10:00 ~ 13:00 (Approx.3.0 hours)
<b>Meeting place</b>	At the sushi academy located near Heiandori station (subway)
<b>Meal</b>	Lunch <b>Participants</b> 1 ~ 6
<b>Note</b>	<ul style="list-style-type: none"> <li>· Please inform us beforehand if you have any allergies or religious or health restrictions.</li> <li>· An exact map of the sushi academy will be provided after your booking is confirmed</li> <li>· No English speaking staff, but written English instruction will be provided.</li> </ul>

Sushi **10001**  
**寿司** making experience and chef recommendation for dinner at Sushi bar

You will learn how to make Sushi by Taisho(professional Sushi Chef) at a Sushi Bar. You will try "Nigiri Sushi"(hand made Sushi)and "Maki Sushi"(rolled sushi). After making sushi for approximately an hour, you will sit down for a dinner of your handmade creations, as well as some sushi and sashimi the chef prepares for your dinner. You also have the chance to see a professional making Otsukuri (sashimi) and sushi right in front of you! In this activity, you can enjoy making sushi, having dinner and a friendly conversation with the Taisho during which a licensed English-speaking guide will translate for you.



▲ The photo is just a sample and subject to change according to the season and availability.



**Pick up hotel list**  
 Nagoya Marriott Hotel/Hilton Nagoya/Nagoya Kanko/Tokyu Hotel/  
 Westin Nagoya Castle/ANA Crowne Plaza Hotel

<b>Fare(16 years old or older)</b>	<b>¥26,000</b>
<b>Included in the program</b>	Dinner, lecture fee, English speaking guide, pick up drop off service,
<b>Available date</b>	Monday through Saturday(Except Japanese National Holiday)
<b>Time</b>	16:15 ~ 19:15 (Approx.3.0 hours)
<b>Meeting place</b>	Above listed hotel
<b>Meal</b>	Dinner <b>Participants</b> 2 ~ 6
<b>Note</b>	· Please inform us beforehand if you have any allergies or religious or health restrictions.

**Why not trying Nagoya sightseeing in 着物?** **10022**  
 Kimono **10023**

Women can rent ※Furisode, Komon or Homongi kimono, known as formal kimono. In summer, you can choose Yukata, known as cotton casual kimono. Men can rent Kimono or Hakama. You can choose your favorite pattern from our wide selection. (30 women's kimono, 20 men's kimono and limited pattern for kids above 3 years old.) Please pick out the one that suits you. A professional dresses you in a kimono. After you dressed in kimono, please enjoy strolling around Nagoya by yourself. Recommended place, Nagoya castle is within walking distance from the shop. Please come back to the shop and return the kimono by 17:30.



<b>Fare</b>	<b>¥4,000 or ¥10,000</b> (※depending on Kimono)
<b>Included in the program</b>	Wearing full set of kimono
<b>Available date</b>	Except Tuesday
<b>Time</b>	Start every 30 minutes between 10:00 ~ 14:00
<b>Meeting place</b>	At the rental kimono shop located near Nagoya castle
<b>Meal</b>	None <b>Participants</b> 1 ~
<b>Note</b>	<ul style="list-style-type: none"> <li>· ※Komon, Homongi (kimono with short sleeve) or Yukata for woman and hakama and kimono for men excluding hair set are at the rate of ¥4,000. [code:10022] Furisode(kimono with long sleeve for woman) including hair set is at the rate of ¥10,000. [code:10023]</li> <li>· An exact map of the kimono rental shop will be provided after your booking is confirmed</li> </ul>

Kimono **10019**  
**着物** dressing and professional photo shooting for your memory

This program is a good choice for family, friends and couple to have photo memory of you in kimono. Choose your favorite kimono from more than a hundred of selection and a professional staff will dress you. After that, move to the photo studio in the shop, strike a pose like a model and take a special photo in traditional kimono costume. Now you become a Japanese beauty!!



<b>Fare(3 years old or older)</b>	<b>¥6,000</b>
<b>Included in the program</b>	Wearing full set of kimono, photo shooting for 1 pose, CDR
<b>Available date</b>	Except Wednesday
<b>Time</b>	Start every 30 minutes between 10:00 ~ 15:00
<b>Meeting place</b>	At the rental kimono shop located near Fushimi station(subway)
<b>Meal</b>	None <b>Participants</b> 1 ~
<b>Note</b>	<ul style="list-style-type: none"> <li>· We have kimono for women and men, 3years old or order.(For men and children, there are small kind of selection.)</li> <li>· An exact map of the kimono shop will be provided after your booking is confirmed</li> <li>· No English speaking staff but written English instruction will be provided.</li> </ul>

**Tempura food sample making experience!!** **10018**

Almost look real food, familiar to showcases in front of restaurant in Japan. In this program, you can make your own version of Tempura using wax which is an original material of food sample, and take it home as souvenirs. After your experience, you can also look at the craftsman making various food art at the work shop. They have various kind of plastic food sample for sale. You can have a look there.



<b>Fare(7 years old or older)</b>	<b>¥2,500</b>
<b>Included in the program</b>	Making 3 pieces of Tempura food samples
<b>Available date</b>	Monday through Friday(Except Japanese National Holiday)
<b>Time</b>	13:00,14:00,15:00,16:00 ~ (Approx.50min)
<b>Meeting place</b>	At the food sample workshop located near Honjinstation (subway)
<b>Meal</b>	None <b>Participants</b> 2 ~ 6
<b>Note</b>	<ul style="list-style-type: none"> <li>· An exact map of the food sample work shop will be provided after your booking is confirmed</li> <li>· No English speaking staff but written English instruction will be provided.</li> <li>· Making parfait and pasta samples are for optional</li> </ul>

# Join and look into traditional 10027 wa 和 Wadaiko Japanese drum practice

In this activity, you can experience a short Japanese drum lesson for about 40 minutes. The origin of traditional Japanese drum play, "Owari Shinjiro Daiko" performed by the society for conservation. It goes way back to the mid Edo era for about 250 years ago. It has started from "Kagura"(sacred music) of Atsuta Shrine, one of the most important shrines in Japan.

This time what you can try is "Japanese traditional drum performance". Sitting on the floor and beat the drums. It is not very easy but try to remember a little bit and play with Japanese flute at the end!!

After your short lesson, you can see the drummers' performance. Please be noted that the drum performance in this program is not a stage performance, this is their practice. However you can feel the holy sound from their play.



## information

Transportation is not included in this activity. Please come to the activity location by yourself. (Minato ward, Nagoya) The specific address will be provided after your booking is confirmed.

Taxi fare from Nagoya station approximately ¥3,600/one way (25min), from nearest subway station Tokai-dori or Takabata approximately ¥2,200/one way.(15min)



Fare(10years old or older)	¥5,000		
Included in the program	Lecture fee		
Available date	Every Wednesday		
Time	19:15 ~ 21:00 (Approx. 1.hour45min)		
Meeting place	At the Taiko lesson house (15minutes away from subway Tokai-dori station or Takabata station by taxi)		
Meal	None	Participants	2 ~ 10
Note	· No English speaking staff, but written English instruction will be provided.		

# Let's experience 10025 sho 書 Shodo(calligraphy)

This is an ideal choice for you, if you are interested in Japanese culture. Discover the beauty of writing through Japanese brush calligraphy. Good for the first time visitors, who want to know Japanese culture deeply. Learn how to write with Fude(brush) and Bokujuyu (Black ink) step by step, and create your own unique souvenir at the end of the lesson.

Whenever you need, teacher is next to you to show you the way.



Complete your art



Concentrate on your writing. Express beauty of lines.

Fare(10years old or older)	¥5,000		
Included in the program	Lecture fee, tools for Shodo(Calligraphy) for rent		
Available date	Monday, Wednesday, Thursday, Sunday (Except National holiday)		
Time	Monday 10:00 ~, Wednesday 12:00 ~, Thursday 10:00 ~, 12:30 ~ Sunday 12:30 ~, 15:00 ~ (Approx. 1.5hour)		
Meeting place	At the shodo school located near Kurokawa station (subway)		
Meal	None	Participants	2 ~ 10
Note	· An exact map of Shodo school will be provided after your booking is confirmed · No English speaking staff, but written English instruction will be provided. · Black ink is not easy to remove if it gets on your cloth.		

# Enjoy strolling around 30001 Takayama Old Town of 高山 with an English speaking guide

7:00 Meet at Nagoya Station tourist information center and take a bus to Takayama

A licensed English speaking guide accompanies the tour from Nagoya station and talks about the sights along the way and various aspects of Takayama.

Around 10:00 Arrive at Takayama station

Miyagawa Morning Market and Old Town (Take a scenic walk [approx. 110min])

🚶 Lunch [approx. 50min] 🚌 Takayama Jinya [approx. 50min] 🚌 Takayama Bus center



Around 15:00 Take a bus to Hida folk village

Hida folk village [approx. 70 min] : An open air museum exhibiting over 30 traditional houses from the Hida region will make you feel as if you were a time-traveler several decades ago.



Around 16:30 Take a bus to Takayama Station

🚌 Transfer at Takayama Bus center 🚌

Around 20:10 Nagoya Station

🚶 :walk 🚌 :bus

Fare(12years old or older)	¥38,000 (6-11years old ¥35,000)		
Included in the program	Lunch, transportation and admission fees specified in the itinerary, English speaking guide		
Available date	Every day		
Time	7:00 ~ 20:10 (Approx. 13 hours)		
Meeting place	Nagoya station tourist information center		
Meal	Lunch	Participants	2 ~ 10
Note	· An exact map of Nagoya station tourist information center will be provided after your booking is confirmed.		

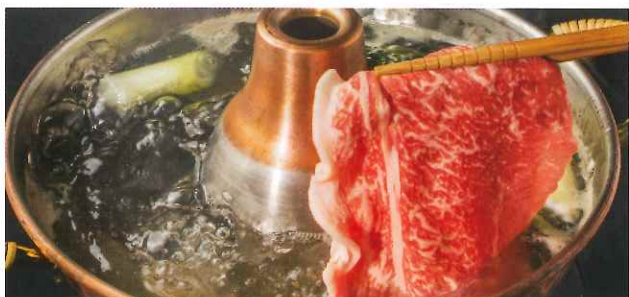
# Takayama Shirakawago Explore 高山 and 白川郷 with an English Guide 30002

A licensed English speaking guide accompanies the tour from Nagoya station and talks about the sights of Takayama and Shirakawago.

Take a train to Takayama and enjoy strolling around Takayama old town and have Hida beef for lunch. In the afternoon take a bus to Shirakawago and enjoy UNESCO world heritage site.



Fare(12years old or older)	¥58,000 (6-11years old ¥49,500)		
Included in the program	Lunch, transportation and admission fees specified in the itinerary, English speaking guide		
Available date	Every day		
Time	7:15 ~ 21:15 (Approx. 14 hours)		
Meeting place	Nagoya station tourist information center		
Meal	Lunch	Participants	2 ~ 10
Note	· An exact map of Nagoya station tourist information center will be provided after your booking is confirmed.		



### ① Wagyu shabu-shabu dinner

Shabu-Shabu which is a Japanese dish featuring thinly sliced beef boiled in hot soup at a restaurant. The name of dish "Shabu-Shabu" comes from derived from the sound emitted when the ingredients are stirred in the cooking pot. The beef we serve is as Graded A5 beef. (the best quality)



### ② Authentic Crab Cuisin

This restaurant specializing in crab cooking, is the originator of creative crab cuisine in Japan. A natural favorite in Japan and also be loved by visitors from overseas.



### ③ Tofu full course dinner

Tofu is known for its extraordinary nutritional benefits, as well as its versatility. It is made by coagulating soy milk and then pressing the resulting curds into soft white blocks. The restaurant serves tofu in a series of dishes cooked in different ways and in beautiful presentations.



### ④ Dinner at Sushi bar

You will taste a variety of sushi along with nigiri and other seasonal Japanese dishes. Good thing at this sushi restaurant is you can sit in front of the chef and see how he shapes the sushi.



### ⑤ Kushiage dinner

You can enjoy fresh cooked "Kushiage(fried vegetables and meat)" which is the crispy texture of the breaded coat as you taste a variety of seasonal ingredients on skewers.

• These photos are samples and subject to change according to the season and availability.  
• Beverages are not included with dinner.

## Enjoy night activity "Japanese Cabaret" and dinner at a selection of Japanese restaurant

You will have dinner at one of the restaurants (Choose from P9①~⑤). After dinner, you will visit Japanese cabaret and enjoy talking and drinking with a hostess. You can see how the Japanese Cabaret is. Going there may help you let off stress of daily life. Every 30 minutes, they have exciting time called "hussle time", you can dance with your hostess and feel the Exiotic atmosphere together.

### Japanese Cabaret



<b>Dinner</b>	①(10002)	②(10003)	③(10004)	④(10005)	⑤(10006)
<b>Fare</b> (20 yrd old or older)	¥29,000	¥29,000	¥27,500	¥25,000	¥23,000
<b>Included in the program</b>	Dinner, English speaking guide, pick up and drop off service, experience hanazono for 1set (40minutes stay including beverages and a hostess)				
<b>Available date</b>	Every day except restaurants close day				
<b>Time</b>	17:45 ~ 21:30 (Approx 3.5 hours)				
<b>Meeting place</b>	See the pick up list at the bottom				
<b>Meal</b>	Dinner		<b>Participants</b> 2 ~		
<b>Note</b>	・Please inform us beforehand if you have any allergies or religious or health restrictions.				

## Local idol performance and dinner at a selection of Japanese restaurant

You will have dinner at one of the restaurants (Choose from P9①~⑤). After dinner, visit theBSJ theater, where you will see a local idol group dance and sing on the stage in front of you. BSJ is a name of local idol group based in Nagoya. You can experience Otaku culture.

### Local idol performance



\*Otaku...In modern Japanese slang, the term of otaku refers to a fan of any particular theme, topic, or hobby. In this program you can experience idol Otaku.

<b>Dinner</b>	①(10007)	②(10008)	③(10009)	④(10010)	⑤(10011)
<b>Fare</b> (20 yrd old or older)	¥28,000	¥28,000	¥26,500	¥24,000	¥22,000
<b>Included in the program</b>	Dinner, English speaking guide, pick up and drop off service, experience BSJ theater for 1 set (1 hour stay including 2 beverages)				
<b>Available date</b>	Monday through Saturday except restaurants close day				
<b>Time</b>	17:00 ~ 20:50 (Approx. 3.5 hours)				
<b>Meeting place</b>	See the pick up list at the bottom				
<b>Meal</b>	Dinner		<b>Participants</b> 2 ~		
<b>Note</b>	・Please inform us beforehand if you have any allergies or religious or health restrictions.				

## For your convenient dinner plan, Japanese dinner and Taxi arrangement

You will have dinner at one of the restaurants (Choose from P9①~⑤).

Taxi driver will pick you up at around 18:00 and drop you off at around 20:30.



<b>Dinner</b>	①(10012)	②(10013)	③(10014)	④(10015)	⑤(10016)
<b>Fare</b>	¥11,000	¥11,000	¥9,500	¥8,000	¥6,000
<b>Included in the program</b>	Dinner at restaurant, pick up and drop off service by taxi				
<b>Available date</b>	Every day except restaurants close day				
<b>Time</b>	18:00 ~ 20:30 (Approx 2.5 hours)				
<b>Meeting place</b>	See the pick up list at the bottom				
<b>Meal</b>	Dinner		<b>Participants</b> 2 ~		
<b>Note</b>	・Please inform us beforehand if you have any allergies or religious or health restrictions.				

### [Pick up hotel list]

Nagoya Marriott Hotel/Hilton Nagoya/  
Nagoya Kanko/Tokyu Hotel/Westin Nagoya Castle/  
ANA Crowne Plaza Hotel

# Private guide

Hire a licensed English speaking guide and enjoy your stay in Nagoya and Japan more and more!  
Please let us know your preference and places of interest in advance to provide better service.



<b>Fare per guide</b>	7:00~23:00	up to 4 hours	¥25,000
		Extention charge per 30 minutes	¥2,500
	21:00~23:00	Extra charge for late hours per 30 minutes	¥1,300
<b>Included in the program</b>	English speaking guide		
<b>Available date</b>	Every day		
<b>Time</b>	Available from 7:00 till 23:00		
<b>Meeting place</b>	Any places in Nagoya city		
<b>Meal</b>	None	<b>Participants</b>	1 ~ 9
<b>Note</b>	<ul style="list-style-type: none"> <li>· No refund for shorten the tour for your own reason.</li> <li>· Transportation fee, food and drink, any entrance fees for you and your guide during the tour are not included.</li> <li>· When you take meals during the tour</li> <li>1: if the guide joins your meal, please cover the guide's meal.</li> <li>2: if the guide not attend but wait for you during your meal, please make direct payment to the guide as a meal allowance (breakfast JPY1,000, lunch JPY1,500,dinnerJPY2,000)</li> </ul>		

## Application Procedure

Please make bookings through our website.

**URL :** <https://realjapannagoya.com/index.php/>

Search above URL or scan the QR code on the right.



## Cancellation policy and Tour conditions

- Any cancellations made after 17:00JST, 8 days prior to the activity will be subject to a charge of 100% of the total amount. Please contact us immediately for cancellation and changes.
- All fares in this brochure includes tax. The amount is per person except for 10017.
- Another group aside from yours may join to the activity except for 10002~10016 and 10017.
- Tour conditions are stated in our website. Visit the following website before you make booking. <https://realjapannagoya.com/index.php/>

**REAL JAPAN nagoya**  **REAL JAPAN nagoya**

(Tourist top world.,co.Ltd)

No.1988 by Commissioner of Japan tourism Agency

Travel business administrator: Yasuyoshi

(TEL) 052-362-5011

(Email) [rjn@t-topworld.co.jp](mailto:rjn@t-topworld.co.jp)

(Address) 3-20 Nagarachō, Nakagawaku,  
Nagoya, Aichi 4540815



The information in this brochure is current as of May 2016.

All the tour fare is effective till July 2017.

The information in this is subject to change without notice.